

Lyreco National Distribution Centre

Telford, UK

Labelled as a
Case Study in PV
Performance Awards

3.8^{MWp}

System

1,700,000^{KG CO₂}

Equivalent

13,860

tonnes

**Commercial
rooftop PV
system**

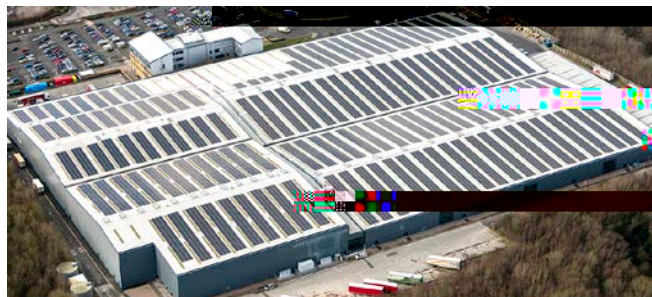
"The Lyreco project demanded a reliable turnkey installation that would be fit for purpose for years to come. To achieve this aim, we needed a module manufacturer renowned for innovation, quality, sophistication and durability which led us to partner with Trina Solar."

James P. ...
E.E. ...

As a ...
PV ...

T ...
E.E. ...
T.S. ...

T.S. ... 13,860 ... 275W
H.M. ...



C ... 7.5 ...
UK ... PV ...
UK ...
3.2 GW.

F ...
G.A. ...
L ... 1,700 ...
53,000 ...

T. ... T.S. ...



Pictures (3) © EvoEnergy

Lyreco Distribution Centre

LOCATION

T. ... U ... K ...

SYSTEM TYPE

C ... R ... PV ...

SYSTEM SIZE

3.811 MW

PRODUCT

TSM-DC05A.08 H ... M 275W

NUMBER OF MODULES

13,860

ANNUAL ENERGY OUTPUT

3,200 MW.

COMPLETION DATE

Jan. 2016

T.S. H ... MP ... PVM ...

T. ... DC05A.08 (II) H ... M P ...
H ... M ...
T.S. ... H ...
T. ... Pa ... E ...
R. ... (PERC) ...
18.0%, ...

T. ... 5- ...
...
...
...

